



arctek

OVERLAY PERFORMANCE TECHNOLOGY

BY  Arclin

Dryshell™



Description

Arctek® Dryshell™ has been engineered to perform as an integrated, moisture resistant and vapour control layer. It replaces the tedious and labour intensive installation of flexible building membranes. Simply tape the seams. Dryshell™ reduces labour costs due to faster installation time, prevents the risk of rips or tears and ensures there is no moisture trapped between membrane and panel.

Features

- Integrated waterproof, vapour control layer
- Instant protection of the substrates during construction
- Ease of installation
- Protects costly insulation layer against moisture ingress

Benefits

- Reduced labour costs due to faster installation compared to regular building wraps
- Consistent vapour control
- No risk of rips or tears
- Increased prevention of air leakage
- No moisture trapped between membrane and panel



Built to suit
your application



Moisture
resistance

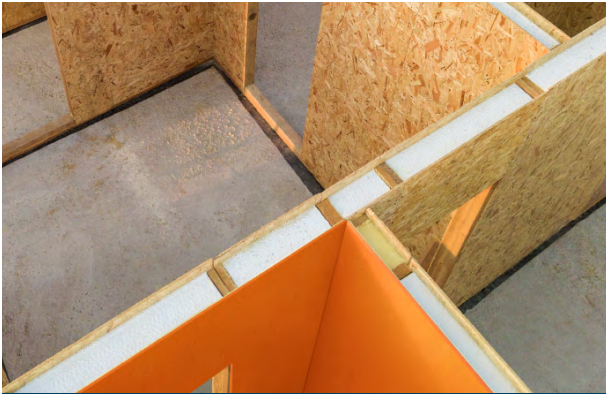


Weather
protection



Strength
& durability

Dryshell™ Applications



SIP Panels



SIP Panels



Roof & Wall Cassettes



Roof & Wall Cassettes

System Suppliers

Arctek® Technology by Arclin, the performance overlay solution for timber manufactured building materials, is now available in the UK and Europe. In the System Suppliers section of our website (arctek.arclin.com) we provide an up-to-date list of panel manufacturers and processors using Arctek® overlay performance technology. You can also always reach out to us at enquiries.arctek@arclin.com



The information and recommendations contained herein are offered as a service to our customers but are not intended to relieve the user from its responsibility to investigate and understand other pertinent sources of information and to comply with all laws and procedures applicable to the safe handling and use of these materials. The information and recommendations provided herein were believed by ARCLIN to be accurate at the time of preparation or obtained from sources believed to be generally reliable. However, ARCLIN makes no warranty concerning their accuracy and ARCLIN will not be liable for claims relating to any party's use of or reliance on information or recommendations contained herein regardless of whether it is claimed that the information or recommendations are inaccurate, incomplete or otherwise misleading.

EU-02.22

OVERLAY PERFORMANCE TECHNOLOGY

arctek.arclin.com